

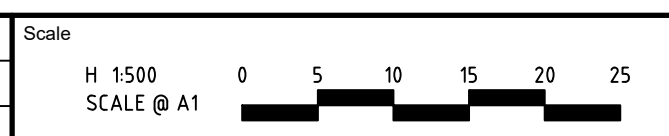
LEGEND

- STAGE BOUNDARY ---
- FINISHED SURFACE CONTOURS (1m) —
- BLOCK AREA / BOUNDARY LENGTH 400m² 4.54
- BLOCK BEARING 110°13'50"
- STORMWATER (PIT) +
- SEWER (MANHOLE) ●
- WATER (HYDRANT) +
- SERVICES TRENCH (Electricity, NBN) —
- STREETLIGHT ⊙
- ELECTRICAL PILLAR / PIT □
- NBN PIT □
- DRIVEWAY LOCATION —
- POTENTIAL FUTURE SUBDIVISION ---
- STREET TREE +
- PATH (1.5m wide) —
- PATH (2.5m wide) —

DISCLAIMER: All care has been taken in the preparation of this material. No responsibility is taken by the vendor for any errors or omissions, and details may be subject to change. Artwork, images and plans are artists impressions only and are not to be relied on as a definitive reference. All road designs, services, contours, lot sizes, lot dimensions, easements and covenants are preliminary only and subject to final survey and authority approval. For final lot numbers refer registered deposited plans (DP).

file name: 309516C001_Estas_Plan_dwg_Layout_name_C002_drafted_by_Ali_Khushid; file location: \\spire\cna\ahdata\ahdata\309516C001\309516C001.dwg; plot date: 22/02/2022 5:08 PM; Sheet 1 of 1 Sheets

Rev	Amendments	Approved	Date
C	CONTRACT ISSUE	BM	17/02/2022
B	FOR INFORMATION ONLY	BM	15/02/2022
A	FOR INFORMATION ONLY	BM	20/01/2022



© Spiire Australia Pty Ltd All Rights Reserved
This document is produced by Spiire Australia Pty Ltd solely for the benefit of and use by the client in accordance with the terms of the retainer. Spiire Australia Pty Ltd does not and shall not assume any responsibility or liability whatsoever to any third party arising out of any use or reliance by third party on the content of this document.



445 TOWNSEND STREET ALBURY
NSW 2640 AUSTRALIA T 61 2 6051 1300
spiire.com.au ABN 55 050 029 635



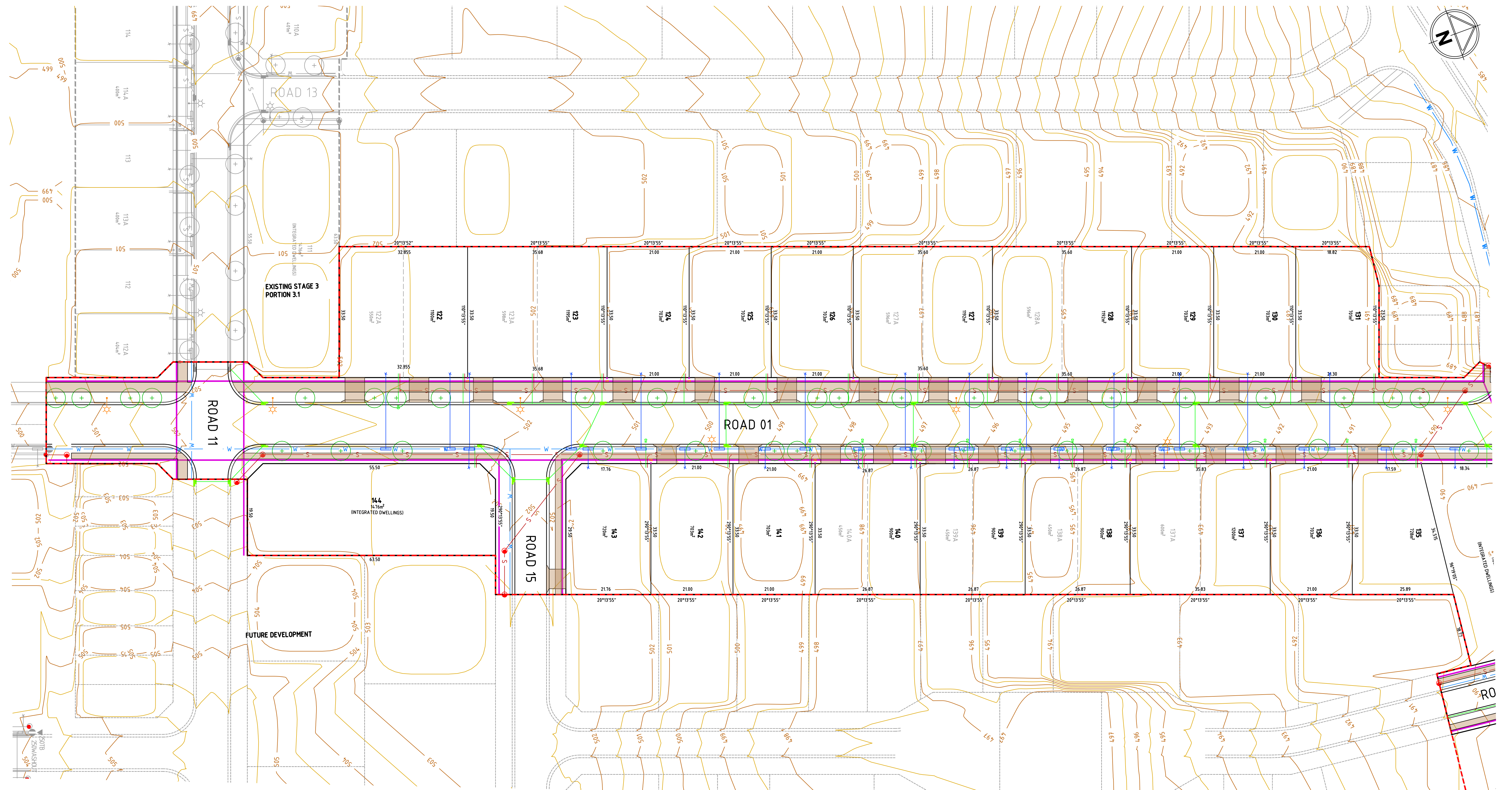
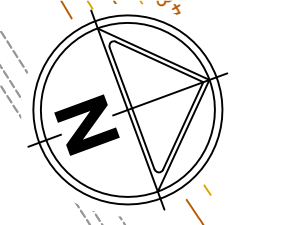
Designed
A.KHURSHID
Authorised
B.MUGRIDGE

Checked
S.BEFF
Date
15/02/2022

**YARRAH ESTATE STAGE 3
PORTION 3.1 - DIVIDED LOTS
LOT DISCLOSURE PLAN - WHOLE STAGE**

YASS VALLEY COUNCIL
WMD CONSTRUCTION PTY LTD

PRELIMINARY Drg No **309516C002** Rev **C**



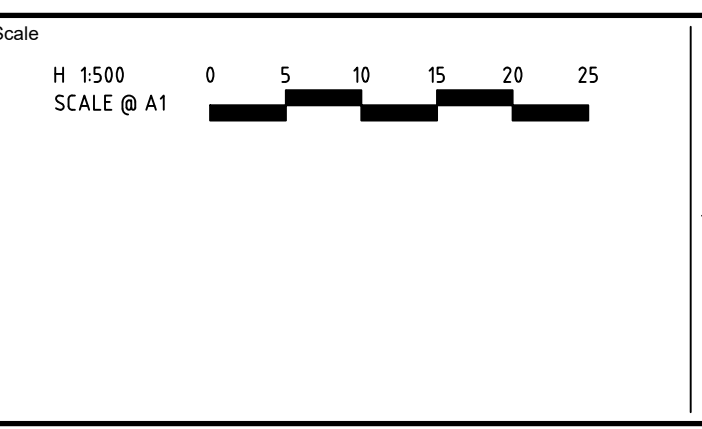
LEGEND

- STAGE BOUNDARY: - - - - -
- FINISHED SURFACE CONTOURS (1m): — 500 —
- BLOCK AREA / BOUNDARY LENGTH: 400m² 4.54
- BLOCK BEARING: 110°13'50"
- STORMWATER (PIT):
- SEWER (MANHOLE):
- WATER (HYDRANT):
- SERVICES TRENCH (Electricity, NBN):
- STREETLIGHT:
- ELECTRICAL PILLAR / PIT:
- NBN PIT:
- DRIVEWAY LOCATION:
- POTENTIAL FUTURE SUBDIVISION:
- STREET TREE:
- PATH (1.5m wide):
- PATH (2.5m wide):

DISCLAIMER: All care has been taken in the preparation of this material. No responsibility is taken by the vendor for any errors or omissions, and details may be subject to change. Artwork, images and plans are artists impressions only and are not to be relied on as a definitive reference. All road designs, services, contours, lot sizes, lot dimensions, easements and covenants are preliminary only and subject to final survey and authority approval. For final lot numbers refer registered deposited plans (DP).

file: \\spire.com.au\planning\Projects\Yarrah\Stage 3\130309901A\DWG\ACAD\plot_date_22/02/2022_5:11 PM Sheet_1 of 1_Sheets
 file: \\spire.com.au\planning\Projects\Yarrah\Stage 3\130309901A\DWG\ACAD\plot_date_22/02/2022_5:11 PM Sheet_1 of 1_Sheets

Rev	Description	Approved	Date
B	CONTRACT ISSUE	BM	17/02/2022
A	ISSUED FOR INFORMATION	BM	15/02/2022
	Amendments		



System Certified

© Spiire Australia Pty Ltd All Rights Reserved
 This document is produced by Spiire Australia Pty Ltd solely for the benefit of and use by the client in accordance with the terms of the retainer. Spiire Australia Pty Ltd does not and shall not assume any responsibility or liability whatsoever to any third party arising out of any use or reliance by third party on the content of this document.

445 TOWNSEND STREET ALBURY
 NSW 2640 T 61 2 6051 1300
 spiire.com.au ABN 55 050 029 635

Designed
A.KHURSHID

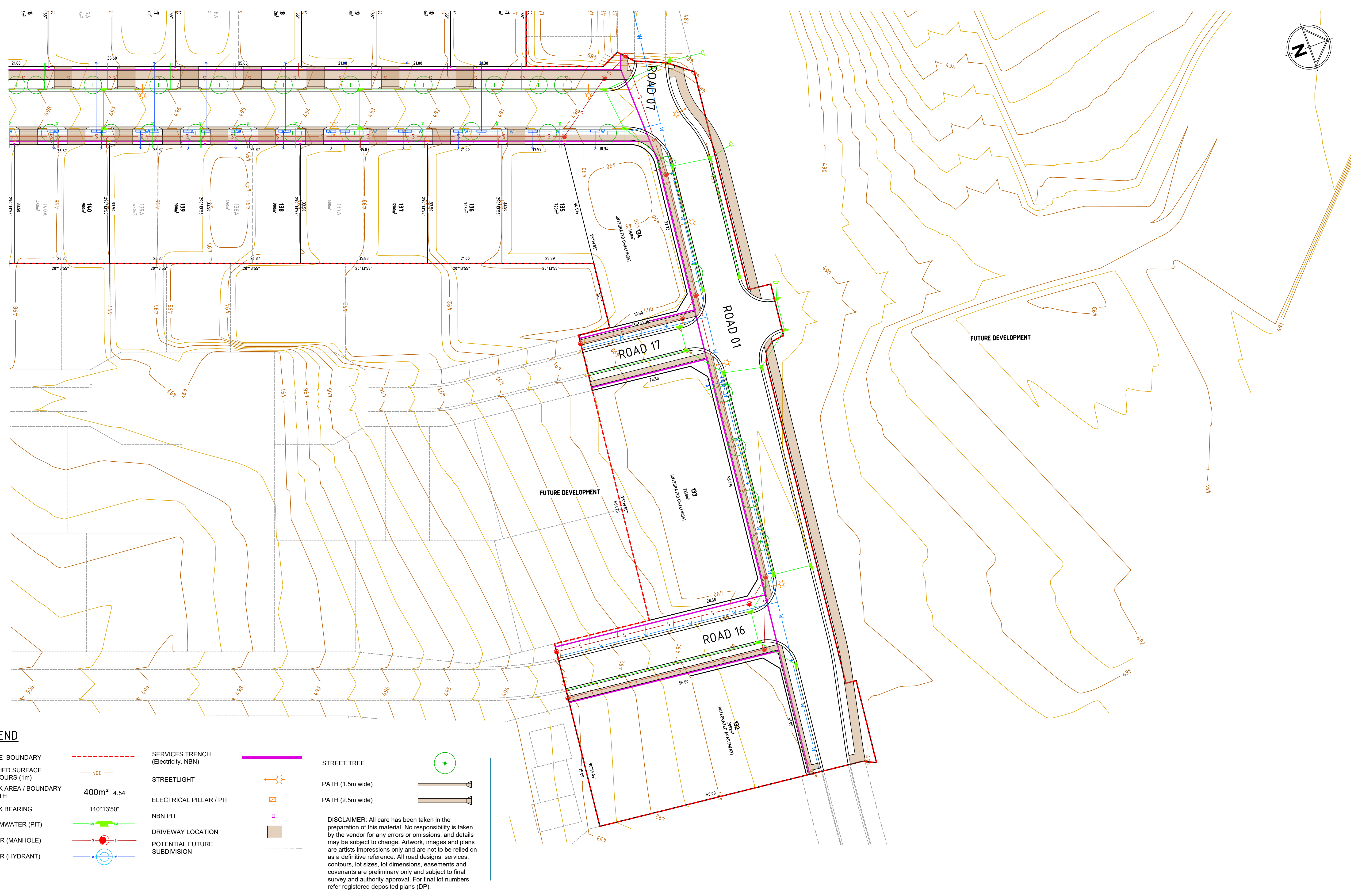
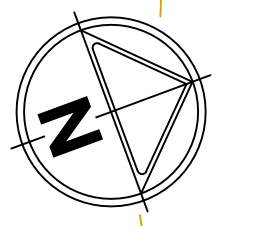
Checked
S.BEFF

Authorised
B.MUGRIDGE

Date
15/02/2022

YARRAH ESTATE STAGE 3
PORTION 5.1
 LOT DISCLOSURE PLAN - WHOLE STAGE
 SHEET 1
 YASS VALLEY COUNCIL
 WMD CONSTRUCTION PTY LTD

PRELIMINARY Drg No **309904C001** Rev **B**



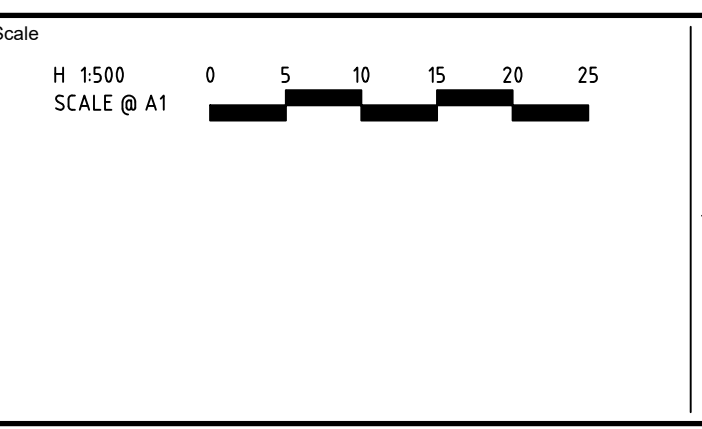
LEGEND

- STAGE BOUNDARY ---
- FINISHED SURFACE CONTOURS (1m) — 500 —
- BLOCK AREA / BOUNDARY LENGTH 400m² 4.54
- BLOCK BEARING 110°13'50"
- STORMWATER (PIT) ■
- SEWER (MANHOLE) ●
- WATER (HYDRANT) ⊕
- SERVICES TRENCH (Electricity, NBN) —
- STREETLIGHT ☀
- ELECTRICAL PILLAR / PIT □
- NBN PIT □
- DRIVEWAY LOCATION ■
- POTENTIAL FUTURE SUBDIVISION ---
- STREET TREE ⊕
- PATH (1.5m wide) ▬▬▬
- PATH (2.5m wide) ▬▬▬▬▬

DISCLAIMER: All care has been taken in the preparation of this material. No responsibility is taken by the vendor for any errors or omissions, and details may be subject to change. Artwork, images and plans are artists impressions only and are not to be relied on as a definitive reference. All road designs, services, contours, lot sizes, lot dimensions, easements and covenants are preliminary only and subject to final survey and authority approval. For final lot numbers refer registered deposited plans (DP).

file:///C:/Users/Ally/Khurshid/Projects/309904C002/2022/2022-5-11 PM Sheet 1 of 1 Sheets
 file:///C:/Users/Ally/Khurshid/Projects/309904C002/2022/2022-5-11 PM Sheet 1 of 1 Sheets
 file:///C:/Users/Ally/Khurshid/Projects/309904C002/2022/2022-5-11 PM Sheet 1 of 1 Sheets

Rev	Description	Approved	Date
B	CONTRACT ISSUE	BM	17/02/2022
A	ISSUED FOR INFORMATION	BM	15/02/2022



System Certified

© Spiire Australia Pty Ltd All Rights Reserved
 This document is produced by Spiire Australia Pty Ltd solely for the benefit of and use by the client in accordance with the terms of the retainer. Spiire Australia Pty Ltd does not and shall not assume any responsibility or liability whatsoever to any third party arising out of any use or reliance by third party on the content of this document.

445 TOWNSEND STREET ALBURY
 NSW 2640 T 61 2 6051 1300
 spiire.com.au ABN 55 050 029 635

Designed
A.KHURSHID
 Authorised
B.MUGRIDGE

Checked
S.BEFF
 Date
 15/02/2022

YARRAH ESTATE STAGE 3
PORTION 5.1
LOT DISCLOSURE PLAN - WHOLE STAGE
SHEET 2
 YASS VALLEY COUNCIL
 WMD CONSTRUCTION PTY LTD

PRELIMINARY Drg No **309904C002** Rev **B**